



Beaufort County
Public Works
Stormwater Infrastructure
Project Summary

Project Summary: St. Helena Island Vacuum Truck - Luther Warren Drive, Levant Byas Road, John Fripp Circle,
David Green Road, Mattis Drive, and Tombee Road,

Activity: Routine/Preventive Maintenance

Narrative Description of Project:

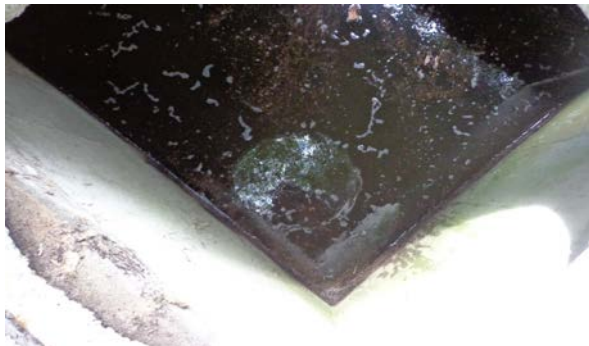
Project improved 40 L.F. of drainage system. Cleaned out (21) catch basins. Jetted (10) crossline pipes, (8) driveway pipes, (1) access pipe and 40 L.F. of channel pipe.

Completion: Nov-15

2016-309 / St. Helena Island Vacuum Truck	Labor Hours	Labor Cost	Equipment Cost	Material Cost	Contractor Cost	Indirect Labor	Total Cost
AUDIT / Audit Project	0.5	\$11.75	\$0.00	\$0.00	\$0.00	\$6.62	\$18.36
CBCO / Catch basin - clean out	58.0	\$1,303.21	\$251.72	\$258.68	\$0.00	\$840.90	\$2,654.51
CLPJT / Crossline Pipe - Jetted	33.0	\$773.38	\$186.62	\$107.20	\$0.00	\$506.25	\$1,573.45
DPJT / Driveway Pipe - Jetted	22.0	\$503.42	\$95.48	\$58.94	\$0.00	\$326.70	\$984.54
SD / Soft Digging	6.0	\$137.28	\$26.04	\$20.10	\$0.00	\$89.10	\$272.52
2016-309 / St. Helena Island Vacuum Truck Sub Total	119.5	\$2,729.02	\$559.86	\$444.92	\$0.00	\$1,769.57	\$5,503.37

Grand Total	119.5	\$2,729.02	\$559.86	\$444.92	\$0.00	\$1,769.57	\$5,503.37
--------------------	--------------	-------------------	-----------------	-----------------	---------------	-------------------	-------------------

Before



During



After





Project: St. Helena Island Vacuum Truck- David Green Road

Activity: Vacuum Truck

Project #: 2016-309

Township: St. Helena Island

Completed: November 2015

Legend

Drainage Type

- Access Pipe
- Bleeder Pipe
- Channel Pipe
- Channel
- Stream
- Crossline Pipe
- Driveway Pipe
- Lateral
- Lateral Pipe
- River
- Road Pipe
- Roadside
- Roadside Pipe

0 40 80 160 240 320 Feet

1 inch = 170 feet

Prepared By: BC Stormwater Management Utility

Date Print: 11/16/15

File: C:\project summaries map\St. Helena Island Vacuum Truck- David Green Road 2016-309



Project: St. Helena
Island Vacuum
Truck- Levant Byas
Road

Activity: Vacuum
Truck

Project #:
2015-309

Township:
St. Helena Island

Completed:
November 2015

Legend

Drainage Type

- Access Pipe
- Bleeder Pipe
- Channel Pipe
- Channel
- Stream
- Crossline Pipe
- Driveway Pipe
- Lateral
- Lateral Pipe
- River
- Road Pipe
- Roadside
- Roadside Pipe

0 20 40 80 120 160
Feet

1 inch = 83 feet

Prepared By: BC Stormwater Management Utility

Date Print: 11/16/15

File: C:\project summaries map\St. Helena Island Vacuum Truck- Levant Byas Road



Project: St.Helena
Island Vacuum
Truck- John Fripp
Circle

Activity: Vacuum
Truck














Project #:
2016-309

Township:
St. Helena Island

Completed:
November 2015

Legend

Drainage Type

-  Access Pipe
-  Bleeder Pipe
-  Channel Pipe
-  Channel
-  Stream
-  Crossline Pipe
-  Driveway Pipe
-  Lateral
-  Lateral Pipe
-  River
-  Road Pipe
-  Roadside
-  Roadside Pipe

0 10 20 40 60 80
Feet

1 inch = 50 feet

Prepared By: BC Stormwater Management Utility

Date Print: 11/16/15

File: C:\project summaries map\St. Helena Island Vacuum Truck- John Fripp Circle_2016-309



Project: St. Helena
Island Vacuum
Truck- Luther
Warren Drive
Map 1

Activity: Vacuum
Truck

Project #:
2016-309

Township:
St. Helena Island

Completed:
November 2015

Legend

Drainage Type

- Access Pipe
- Bleeder Pipe
- Channel Pipe
- Channel
- Stream
- Crossline Pipe
- Driveway Pipe
- Lateral
- Lateral Pipe
- River
- Road Pipe
- Roadside
- Roadside Pipe

0 5 10 20 30 40
Feet

1 inch = 34 feet

Prepared By: BC Stormwater Management Utility

Date Print: 11/16/15

File: C:\project summaries map\St. Helena Island Vacuum Truck-Luther Warren 2016-309



Project: St. Helena
Island Vacuum
Truck- Luther
Warren Drive
Map 2

Activity: Vacuum
Truck

Project #:
2016-309

Township:
St. Helena Island

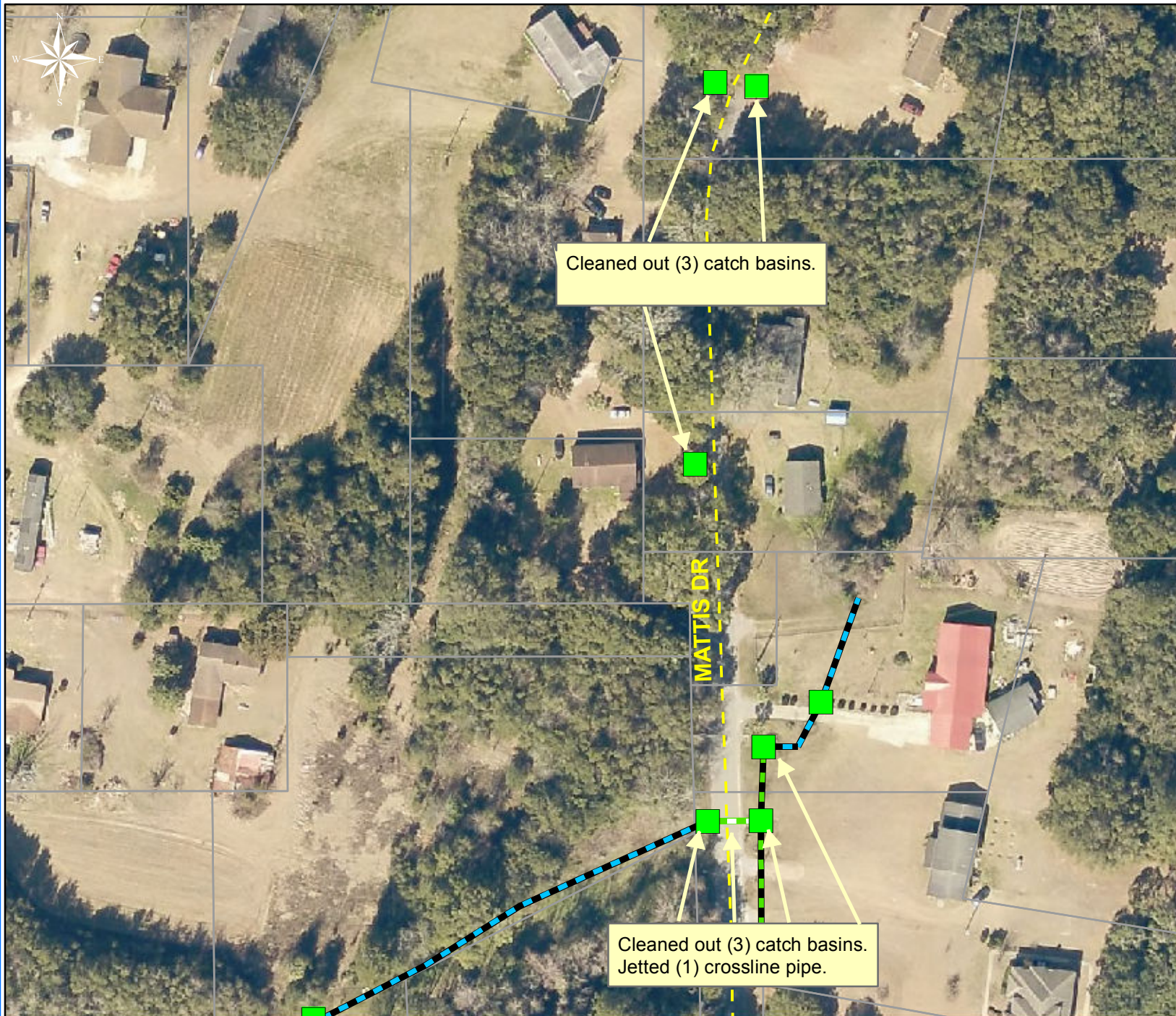
Completed:
November 2015

Cleaned out (2) catch basins.
Jetted (1) crossline pipe and
16 LF of channel pipe.

Legend	
Drainage Type	
	Access Pipe
	Bleeder Pipe
	Channel Pipe
	Channel
	Stream
	Crossline Pipe
	Driveway Pipe
	Lateral
	Lateral Pipe
	River
	Road Pipe
	Roadside
	Roadside Pipe

0 5 10 20 30 40
Feet

1 inch = 34 feet



Project: St. Helena
Island Vacuum
Truck- Mattis Drive
Map1

Activity: Vacuum
Truck

Project #:
2016-309

Township:
St. Helena Island

Completed:
November 2015

Legend

Drainage Type

- Access Pipe
- Bleeder Pipe
- Channel Pipe
- Channel
- Stream
- Crossline Pipe
- Driveway Pipe
- Lateral
- Lateral Pipe
- River
- Road Pipe
- Roadside
- Roadside Pipe

0 25 50 100 150 200 Feet **1 inch = 100 feet**

Prepared By: BC Stormwater Management Utility
Date Print: 11/16/15

File: C:\project summaries map\St. Helena Island Vacuum Truck-Mattis Drive Map1_2016-309



Project: St. Helena
Island Vacuum
Truck- Mattis Drive
Map 2

Activity: Vacuum
Truck

Project #:
2016-309

Township:
St. Helena Island

Completed:
November 2015

Legend

Drainage Type

- Access Pipe
- Bleeder Pipe
- Channel Pipe
- Channel
- Stream
- Crossline Pipe
- Driveway Pipe
- Lateral
- Lateral Pipe
- River
- Road Pipe
- Roadside
- Roadside Pipe

0 10 20 40 60 80
Feet

1 inch = 50 feet

Prepared By: BC Stormwater Management Utility

Date Print: 11/16/15

File: C:\project summaries map\St. Helena Island Vacuum Truck-Mattis Drive Map 2_2016-309



Project: St. Helena
Island Vacuum
Truck- Tombee
Road

Activity: Vacuum
Truck

Project #:
2016-309

Township:
St. Helena Island

Completed:
November 2015

Legend

Drainage Type

- Access Pipe
- Bleeder Pipe
- Channel Pipe
- Channel
- Stream
- Crossline Pipe
- Driveway Pipe
- Lateral
- Lateral Pipe
- River
- Road Pipe
- Roadside
- Roadside Pipe

0 40 80 160 240 320
Feet

1 inch = 170 feet

Prepared By: BC Stormwater Management Utility

Date Print: 11/16/15

File: C:\project summaries map\St. Helena Island Vacuum Truck- Tombee Road_2016-309